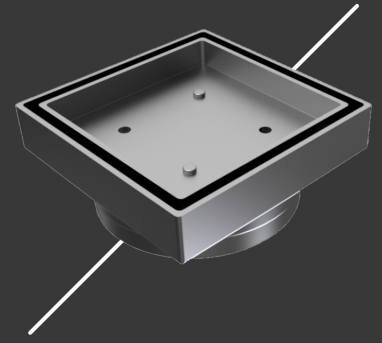




**WONDERCAP**

# TILE INSERT GRATE INSTALLATION

For All Constructions

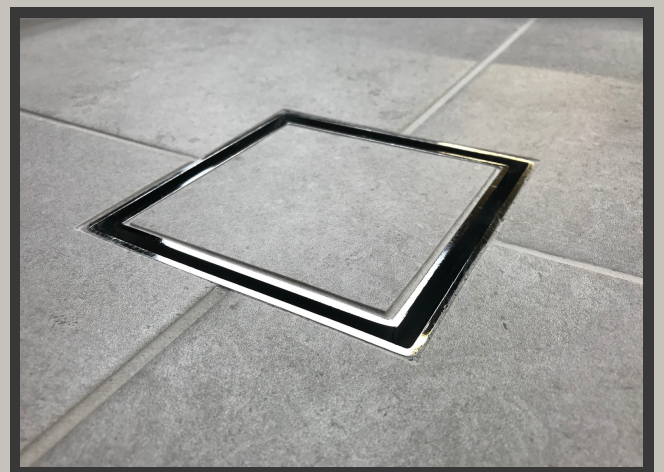
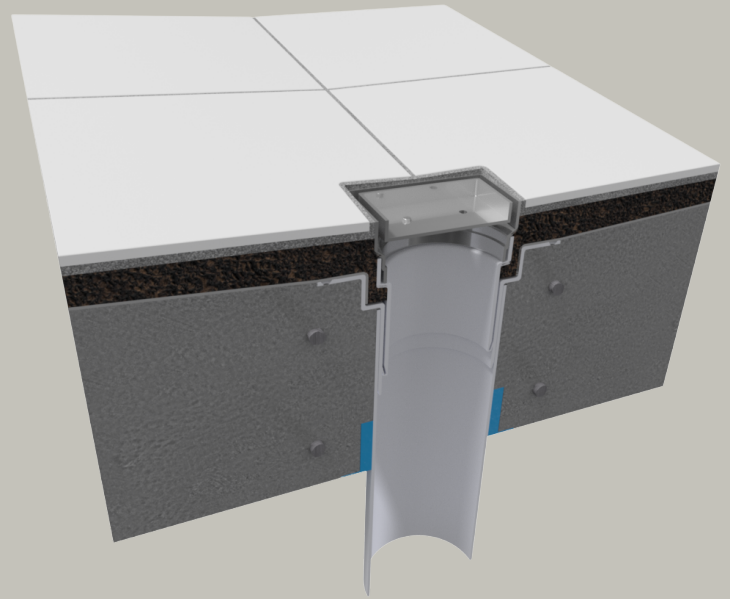


## Take Special Care by Planning for the "Tile Insert Grate"

The tile insert grate requires extra bedding height to set up and grade to drains. When planning your next job, the last bit of information to be found out will be the grate type. Use the Wondercap Drainage System with the rebated base & cap for the floor and shower drains and it won't matter what grate is selected.

Set up the Wondercap Drainage System 15mm lower in poured concrete floors or flush fit with existing timber/ concrete floors.

This will provide the tolerance issues for all of the selected tile insert grates.



Create the illusion of your shower drain vanishing into the floor by installing a tile-insert grate

For more information visit  
[www.wondercap.com.au](http://www.wondercap.com.au)