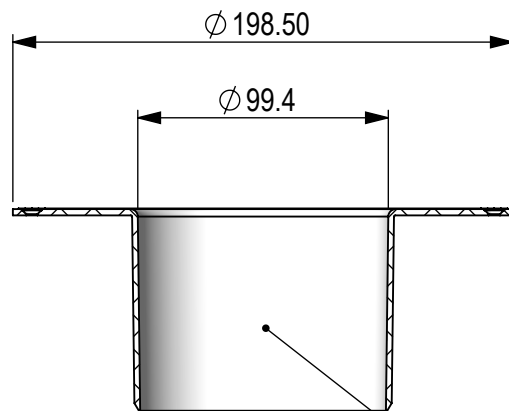
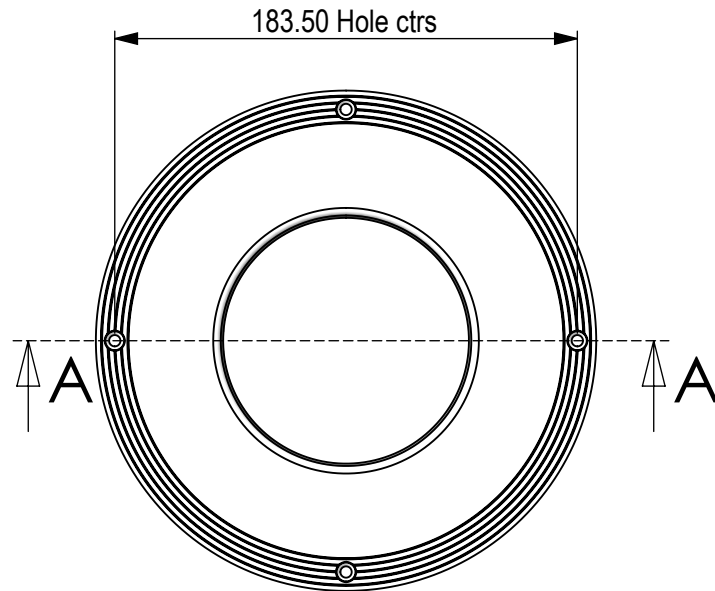
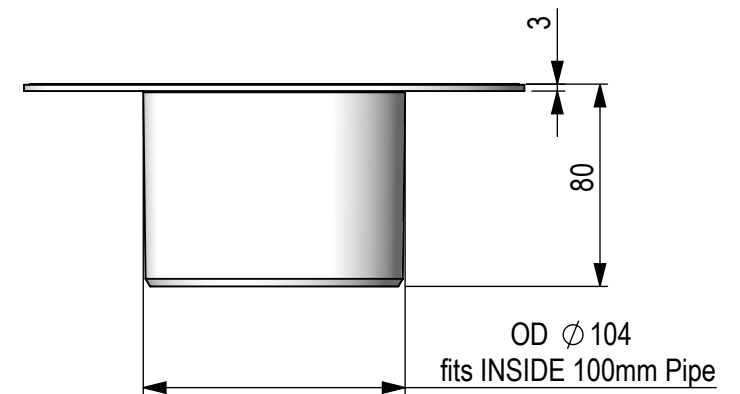
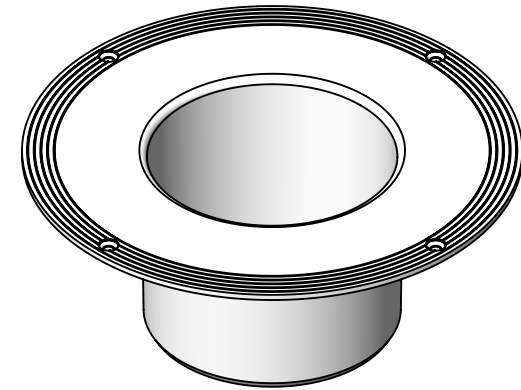


Please refer to 3D CAD files for more information



SECTION A-A



BILL OF MATERIALS		
Item no.	Material	Grams
1	ABS Plastic	113.82

THIS DRAWING IS THE PROPERTY OF "THE WONDERCAP CO." IT IS PRIVATE AND CONFIDENTIAL AND IS SUPPLIED ON THE EXPRESS UNDERSTANDING THAT IT IS NOT TO BE USED FOR ANY PURPOSE OR COPIED OR COMMUNICATED TO ANY OTHER PERSON WITHOUT THE WRITTEN PERMISSION OF "THE WONDERCAP CO."				<div><div>3Di</div><div>DESIGN</div></div> <div>INDUSTRIAL</div>		Gold Coast - Australia Ph: (07) 5575 9965 Mob: 0414 321 237	
MATERIAL: ABS Plastic				SCALE: 1:3		DO NOT SCALE DRAWING	
FINISH: SPI-B1				DRAWN: A.Rodd		<div>The Wondercap Company</div> <div>PO Box 130 Ashmore City Ph: 61 7 5539 3665</div> <div>CLIENT: QLD Australia 4214 info@wondercap.biz</div>	
<div><div>1</div><div>CRITICAL DIMENSION</div></div>		<div>GENERAL TOLERANCES: (unless stated)</div> <div>0-1mm ±0.05</div> <div>1.05-10mm ±0.1</div> <div>10.1-100mm ±0.5</div> <div>>100.5mm ± 1.0</div>		<div>CHECKED:</div> <div>DATE: 1/09/2015</div> <div>ALL DIMEN'S IN mm</div>			
<div><div>1</div><div>MAJOR DIMENSION</div></div>				<div><div><div></div><div></div></div></div> <div>A4</div>		wc100rf	
<div><div>A</div><div>MINOR DIMENSION</div></div>				<div><div><div></div><div></div></div></div>		PROJECT DRAWING NO. DESCRIPTION VERSION	