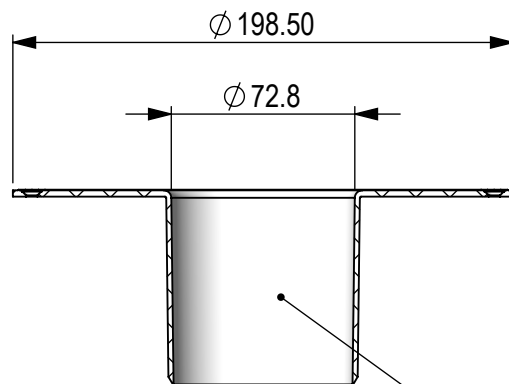
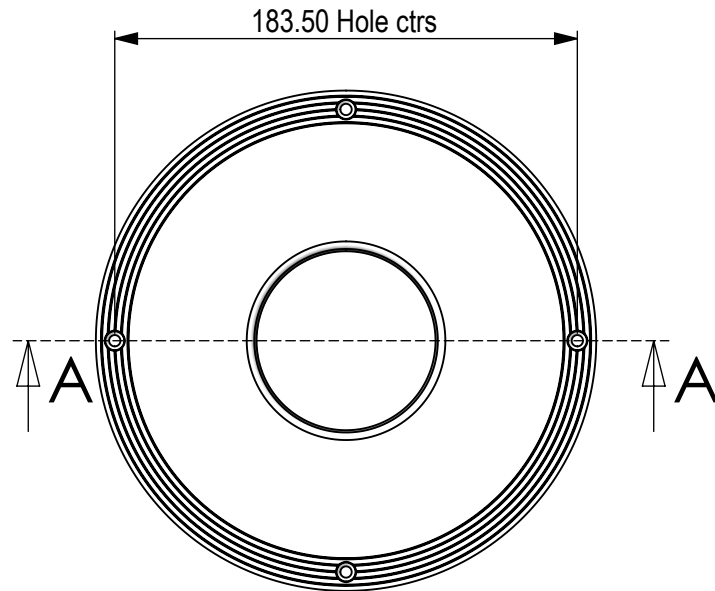
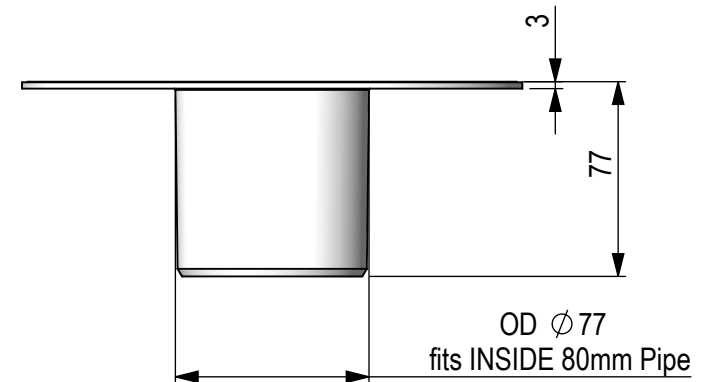
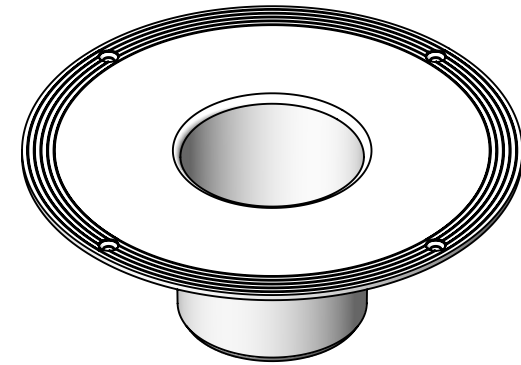


Please refer to 3D CAD files for more information



SECTION A-A



BILL OF MATERIALS		
Item no.	Material	Grams
1	ABS Plastic	102.39

THIS DRAWING IS THE PROPERTY OF "THE WONDERCAP CO." IT IS PRIVATE AND CONFIDENTIAL AND IS SUPPLIED ON THE EXPRESS UNDERSTANDING THAT IT IS NOT TO BE USED FOR ANY PURPOSE OR COPIED OR COMMUNICATED TO ANY OTHER PERSON WITHOUT THE WRITTEN PERMISSION OF "THE WONDERCAP CO."			3Di DESIGN		Gold Coast - Australia Ph: (07) 5575 9965 Mob: 0414 321 237
MATERIAL: ABS Plastic		SCALE: 1:3	DO NOT SCALE DRAWING		
FINISH: SPI-B1		DRAWN: A.Rodd	The Wondercap Company PO Box 130 Ashmore City CLIENT: QLD Australia 4214 Ph: 61 7 5539 3665 info@wondercap.biz		
1 CRITICAL DIMENSION		GENERAL TOLERANCES: (unless stated)			
1 MAJOR DIMENSION		0-1mm ±0.05	wc80rf		
A MINOR DIMENSION		1.05-10mm ±0.1			
		10.1-100mm ±0.5	PROJECT DRAWING NO. DESCRIPTION VERSION		
		>100.5mm ± 1.0			