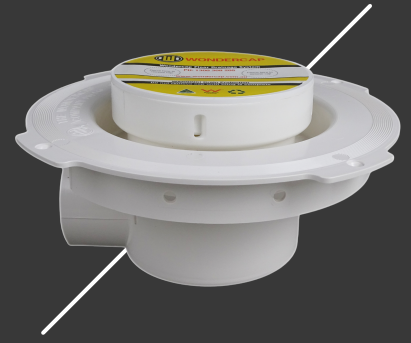




# WONDERCAP

## INSTALLING THE WONDERCAP BALCONY KIT

Concrete Floor/ Timber Floor



### Installation of the Wondercap Balcony Kit

The Wondercap Balcony Outlet has a low-profile design that will allow the Wondercap Balcony Outlet to be installed into balcony decks. The Wondercap Balcony Outlet is supplied with 2 parts: the low-profile 100mm x 50mm diameter horizontal outlet and low-profile base & cap that can be installed & set up in reduced concrete balcony slabs

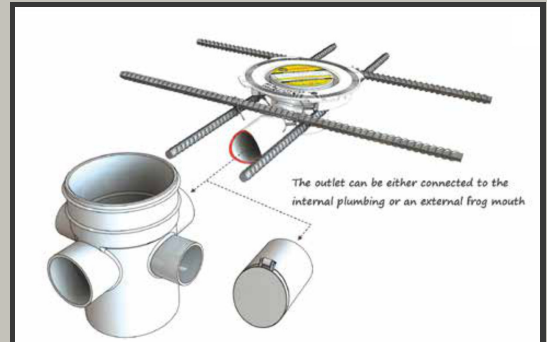
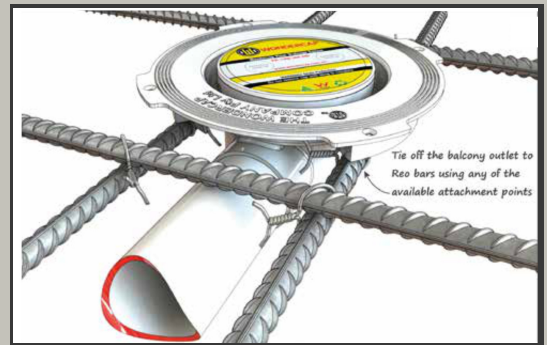
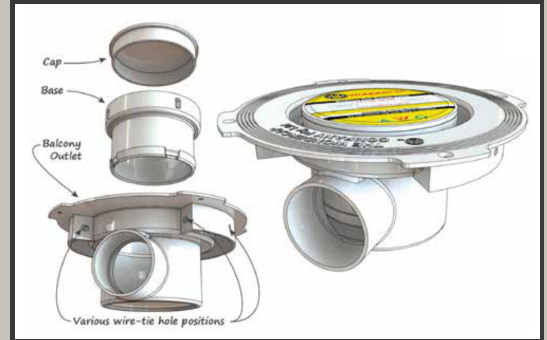
#### Step 1:

The Wondercap Balcony Outlet has 8 fixing points so that it can be securely tied into position with the reinforced steel to help to level up square.

The flush finished Wondercap Balcony Outlet will become a datum point for the concrete to be evenly troweled to the Wondercap Balcony Outlet. The construction strong Balcony Outlet can be easily troweled either by hand or by a troweling helicopter.

#### Step 2:

The 50mm PVC drain outlet can be plumbed to the downpipe system or can be plumbed to overflow externally outside the balcony via a frog flap.



The low-profile balcony outlet kit will resolve those balcony drainage issues.

For more information visit  
[www.wondercap.com.au](http://www.wondercap.com.au)