



WONDERCAP

INSTALLING THE WONDERCAP KIT

Timber Floor/
Cement Sheet Floors



Installing the Wondercap Kit in Wet Areas, Floors, & Shower Drains (Bathroom/ Ensuite/ Laundry)

Set outs for Wondercap Kits:

Allow 140mm diameter hole for the rebate area for the puddle flange

Allow 200mm diameter for the outside edge of the puddle flange

Allow 3mm for the rebate for the puddle flange

Step 1:

Mark out the center locations for the shower and floor waste.

Step 2:

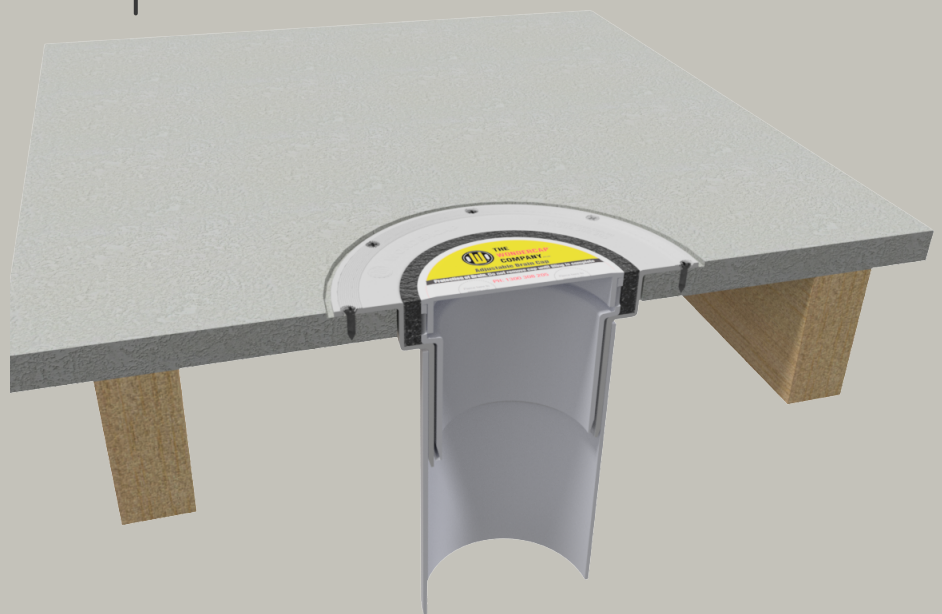
Cut the 140mm diameter hole for the rebate area. Allow 200mm for the overall diameter of the puddle flange. Rebate 3mm to the outer edge of the puddle flange so the Wondercap Kit will fit flush with the floor.

Step 3:

Place the kit into the rebate and screw down flush with the floor.

Step 4:

Connect the below pipework accordingly.



Reduce your waterproofing problems by simply rebating the outer flange into the subfloor prior to waterproofing.

For more information visit
www.wondercap.com.au