



WONDERCAP

VINYL FLOOR GRATE INSTALLATION

For All Constructions



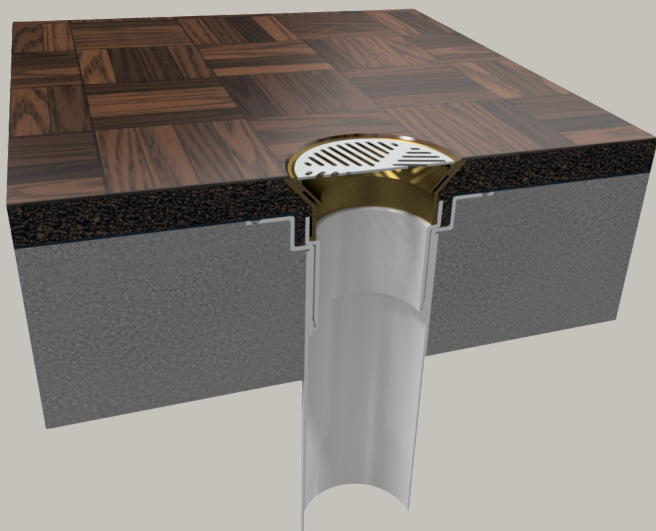
What To Know About Vinyl Floor Grate Installations for Your Next Job

Retirement Homes/ Childcare/ Hospitals
Bathroom/ Laundries/ Showers/ Commercial Kitchens

The architect could request rebated floors in the wet areas to assist in the smooth installation of vinyl epoxy flooring to the drains.

The detailed drawings will include details for vinyl floor finishing's that include rebated floors to allow screed/ bedding to grade the floors to the drains. This grade will allow the vinyl floors to be installed smoothly and graded to the floors & shower drains.

Order vinyl floor grates with the rubber O-rings for PVC.



How To Set Up Vinyl Floor Grates:

Step 1:

Wet areas rebate

- set up the WC100K 10mm below the recommended rebate depth as per drawings
- This will create a low point in the rebated area for the waterproofing to be drained to

Step 2:

- Waterproof the rebated area as required
- Remove the base & cap and waterproof into the rebated puddle flange

Step 3:

- The vinyl floor grate will push into the top section of the base
- Note: If the vinyl floor grate is hard to push in, remove the bottom O-ring and then push into base

Step 4:

- Put grey tape over the chrome grate to protect the chrome and stop bedding excesses going down the drain
- Set up the top of the vinyl grate to suit the bedding height required and to create the lowest point for the drain
- Use the top of the vinyl grate as the datum and bed & screed accordingly

The vinyl floor grate can be installed in a number of ways!

For more information visit
www.wondercap.com.au