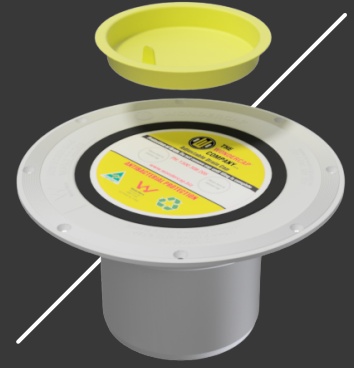




# WONDERCAP

## INSTALLING THE WONDERCAP KIT

Suspended Concrete Decks/  
House Slabs



### Installing the Wondercap Kit in Wet Areas, Floors, & Shower Drains (Bathroom/ Ensuite/ Laundry)

#### Step 1:

The wet areas can achieve positive grades to the floor and shower drains by installing the top of the Wondercap Kit 10mm below the finished concrete slab height.

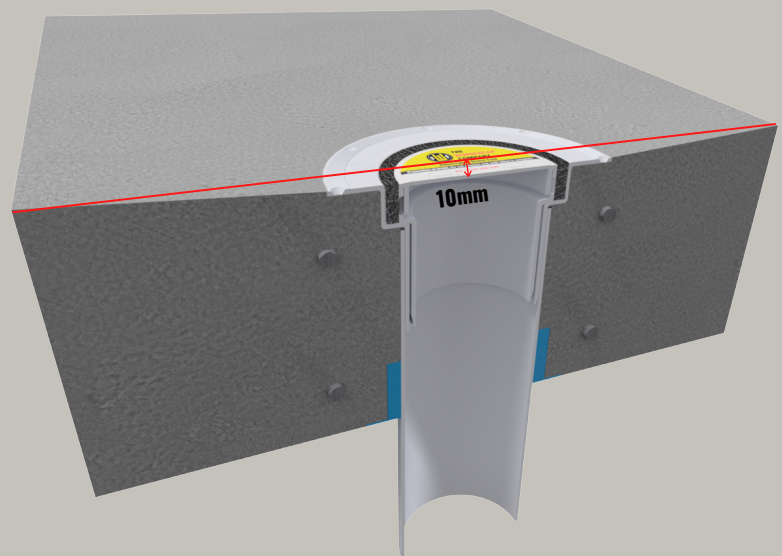
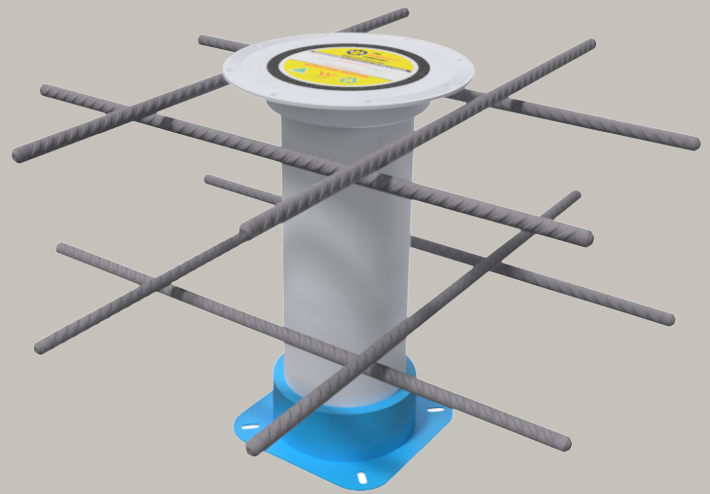
Make sure the Wondercap cap and foam ring are firmly in place prior to concrete pour.

#### Step 2:

The concrete can be pumped and poured in and around the wet areas as required.

The top of the Wondercap is used as a datum point to work the finished concrete to the top of the Wondercap Kit (drain)

The construction strong Wondercap Kit can be easily troweled over and finished with the concrete troweling helicopter.



Solve 80% of construction waterproofing issues by simply using the Wondercap Kit in your next job.

For more information visit  
[www.wondercap.com.au](http://www.wondercap.com.au)